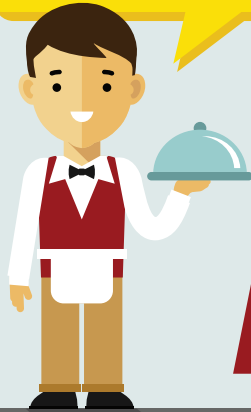


YOU BELONG IN THE PTO!

If any of the people below describe you, then you DEFINITELY belong in our PTO!

I am a single dad working nights, with barely enough time for much of anything.



I work from home full-time and can only dedicate a few hours a week from home.



Some people don't feel comfortable at school or are not able to make it during school hours so our group works to make it more welcoming. We find ways for busy people to contribute from home and still be involved.

We are Spanish-speaking parents who feel like we may not fit in.



I'm a working mom with a crazy schedule. I never know when I might be called in to work.



We hold all our meetings in Spanish & in English, to include everyone! All family members

of our students are welcome in our school community. Being involved is a great way to show the students you care and to be a part of fun things we have planned, so that you can help implement change and create a fun environment!

Our grandkids attend the school and we just don't know exactly what the PTO is or does.

